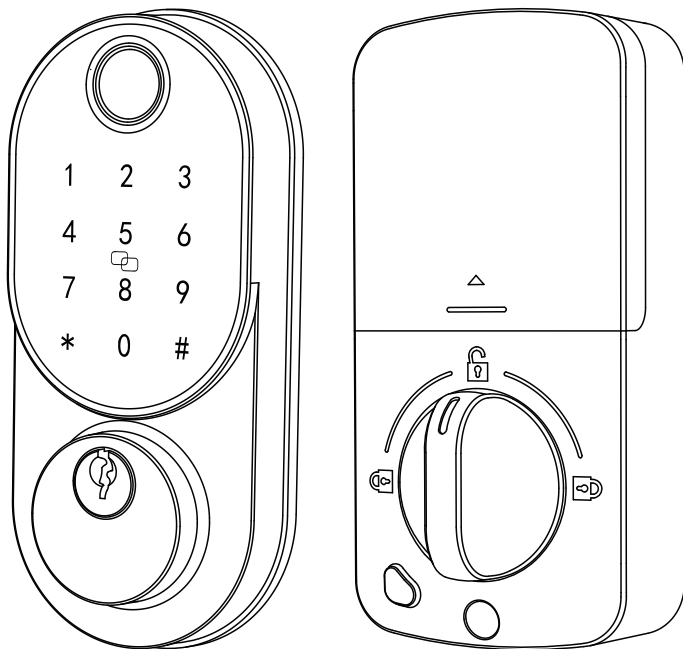


USER MANUAL

SMONET Smart Door Lock



VIDEO INSTRUCTION & UPDATE:

1. Installation Video:

https://youtube.com/playlist?list=PL7U50a4WAvGNhj9yPfJ7sN9_6LMu_VRXv



2. WARRANTY & AFTER-SALE SERVICE

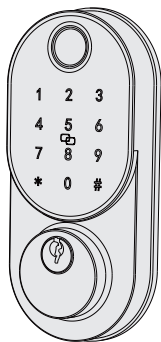
We provide 1 year warranty and life time tech support for our lock.

Please feel free to contact us if you have any questions.

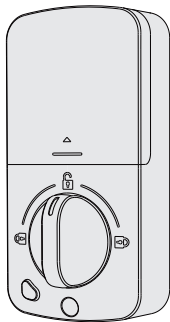
Contents

Parts Identification	01
How to Install the Lock	02
Detect Left/Right Hand Door	06
How to Reset the Lock	07
How to Use	08
Now Let's Start to Use it	10
Quick Guide	10
Detail Setting	15
Troubleshooting	20

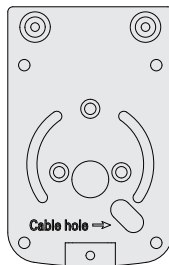
// Parts Identification



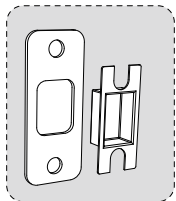
Exterior lock



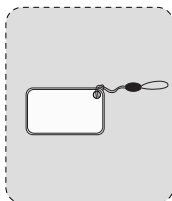
Interior lock



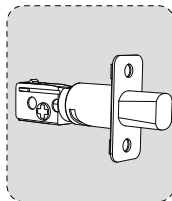
Mounting Plate



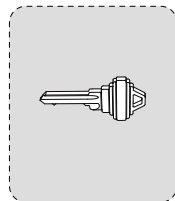
Strike Plate



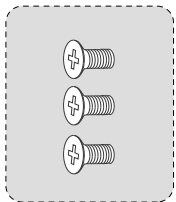
IC Card



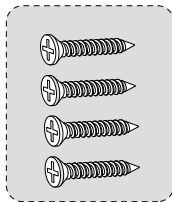
Deadbolt



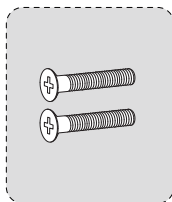
Physical Key



Interior Lock
Screws



Deadbolt/Strike
Plate Screws



Mounting
Plate Screws

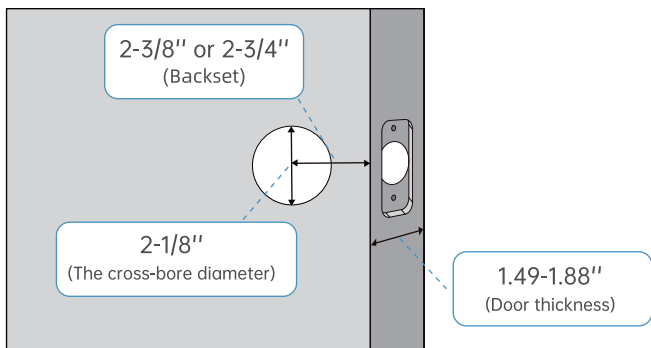


User Manual

// How to Install the Lock

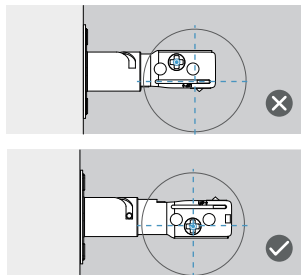
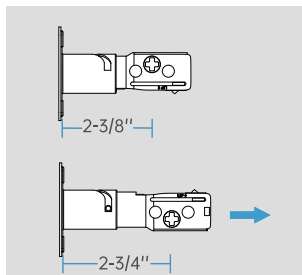
1. Measure the Door Size

Make sure door thickness is 1.49-1.88", door hole diameter is 2-1/8", measure backset size is 2-3/8" or 2-3/4" with the deadbolt.



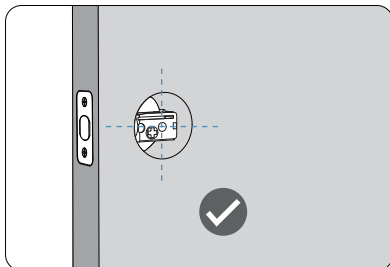
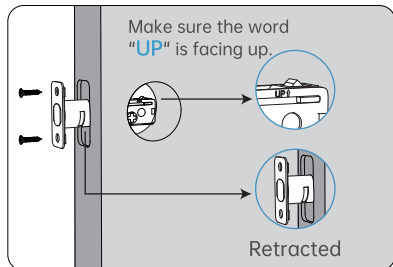
2. Adjust the Length of the Deadbolt

Adjust the deadbolt to 2-3/8" or 2-3/4" based on your door backset size.



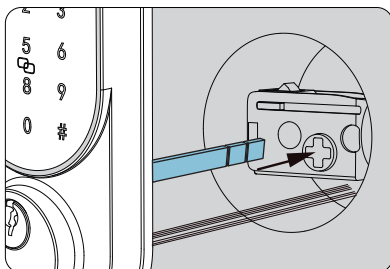
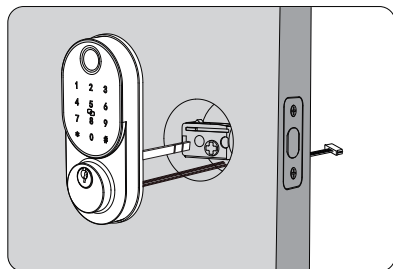
3. Install Deadbolt

Fix the deadbolt with 2pcs deadbolt screws, keep the deadbolt in retracted status.



4. Install Exterior Lock

Route the IC cable below the deadbolt, spindle must be in 'vertical' status.



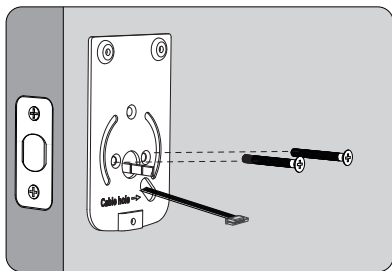
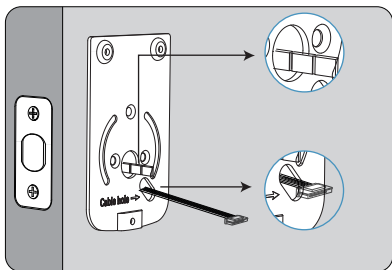
Route the IC cable below the deadbolt.

NOTE: Do not insert the key during the installation.

NOTE: Deadbolt must be in unlock position and the spindle must be in 'vertical' status.

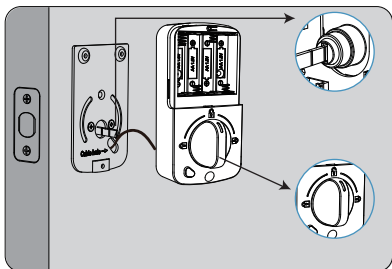
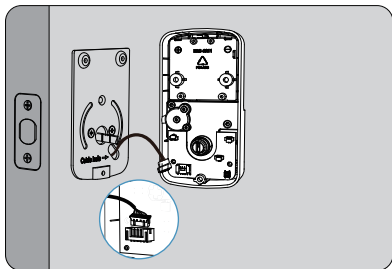
5. Fix the Mounting Plate

- Route the cable through the hole in the mounting plate, word with 'Cable Hole' should face outside.
- Fix the plate with 2pcs mounting plate screws.



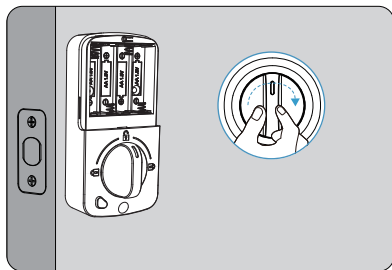
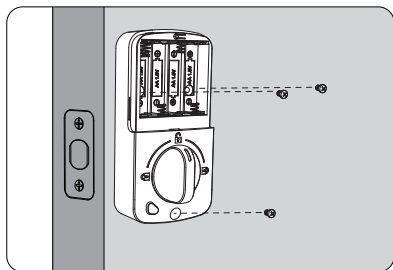
6. Install the Interior Lock

- Connect the IC cable tightly.
- Rotate the door knob in vertical position and insert the spindle. (Don't load batteries until lock is completely installed)



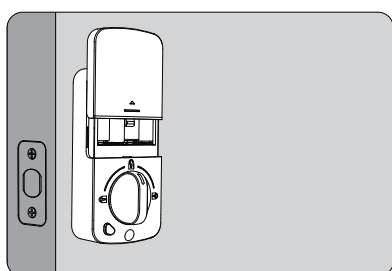
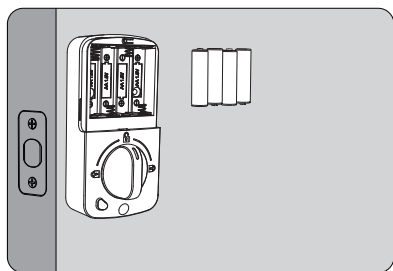
7. Fix Interior Lock

- Secure the lock with 3pcs interior lock screws.
- Test the lock by rotating the door knob to see if the deadbolt can be extended and retracted smoothly.



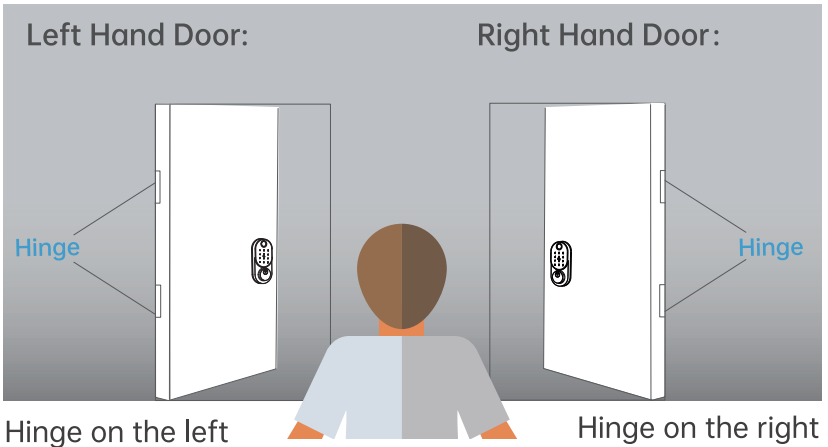
8. Install Batteries

Please install 4 pcs AA batteries in unlock status and keep the door open to avoid being locked out.



// Detect Left/Right Hand Door

Set left/right hand door on keypad



The most important step is to adjust the code to the direction of the door.

How to know your door door direction?

Standing outside of your door (Facing the keypad), locate the door hinge.

If your door hinge is on the left side, Keyboard input *46# → Default Administrator Password "123456" # → 1# (L)

If your door hinge is on the right side, Keyboard input *46# → Default Administrator Password "123456" # → 2# (R)

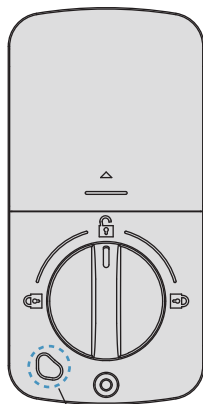
NOTE: The default administrator passcode is 123456

// How to Reset the Lock

Reset method 1.(Recommend)

1. Take down one battery and wait for 5 seconds.
2. Put the battery back.
3. Long press the reset button for 10s while the keypad lighting up.
4. After hearing "Please input the initialization password", enter 000#.
5. After hearing "Administrator deleted successfully",reset successfully.

NOTE: If method 1 doesn't work ,please try method 2 or contact customer service for help.



Reset button

Reset method 2.

(1) Uninstall the lock by taking down the battery cover. Take out the 2 screws inside the battery case.

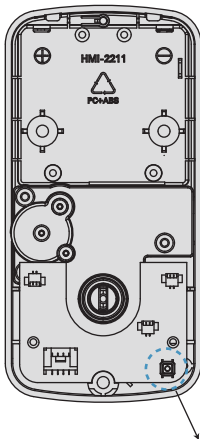
(2) Make sure the IC wire is connected and install the batteries back to case.

(2) Hold the Reset Button (The position is shown below) for 5s. (You'll hear the sound "Input initialization passcode" from the lock)

(3) Input 000# on the keypad after the sound.

(You'll hear "Administrator deleted successfully", which means reset successfully.)

NOTE: If this method doesn't work too, please contact customer service.

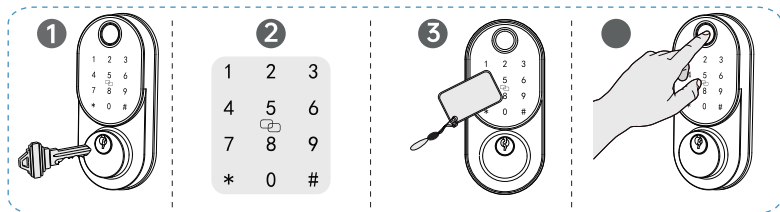


Reset button

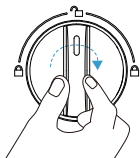
How to Use

Your lock is now installed! Let's learn to use it!

Unlock the door from outside



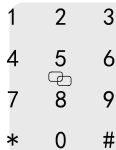
Unlock the door from inside



Rotate the turn piece to unlock position.

Lock the door from outside

1. Hold "#" on the keypad for 2S.
2. In auto lock mode, the bolt will extend out automatically
3. Lock with physical keys



Lock the door from inside

Rotate the turn piece to lock position.

// Now let's start to use it!

Let's set an administrator passcode. please make sure you will remember the code as you will need to use it when edit any setting.

Set an Administrator Passcode

Please input[*#]on the keypad, go to the voice navigation menu. Please set a 4 to 9 digits administrator passcode and press hash key to confirm.

Please input again and press hash key to confirm

Administrator Add Successfully

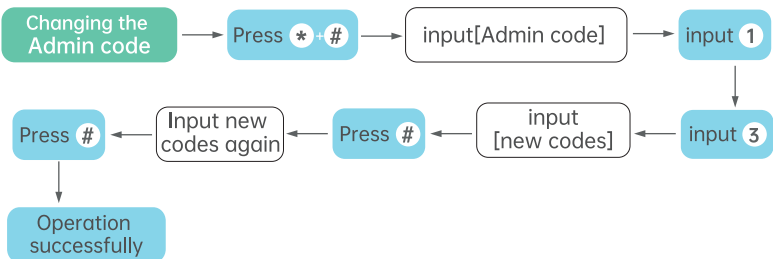
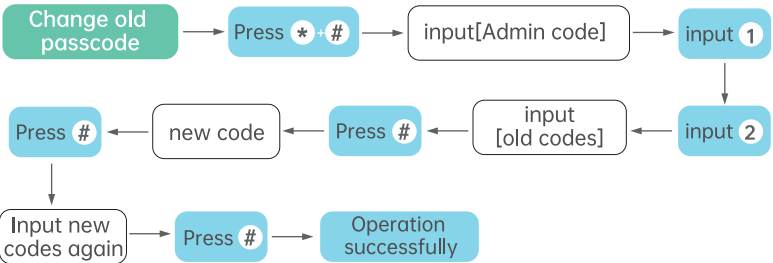
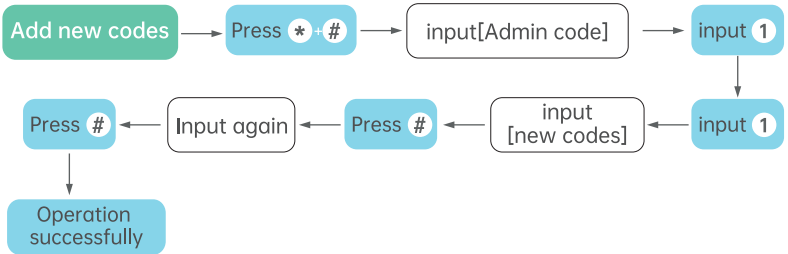
Now you have your own administrator passcode.

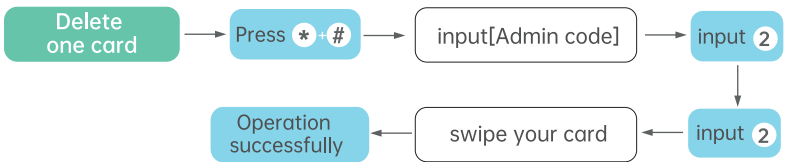
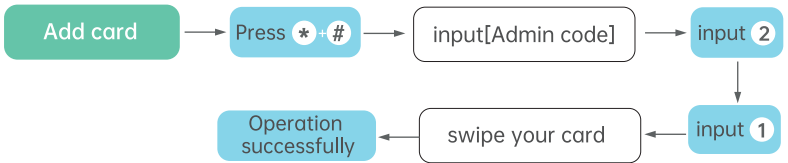
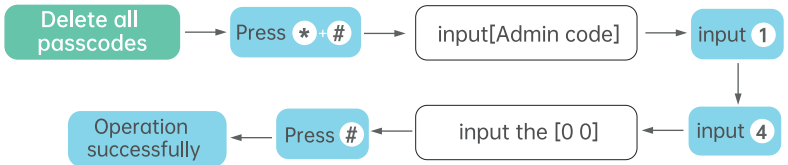
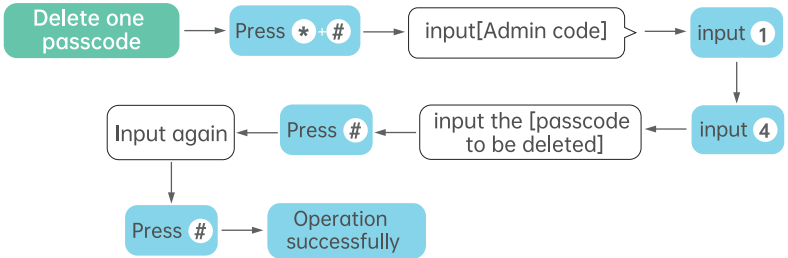
// Quick Guide

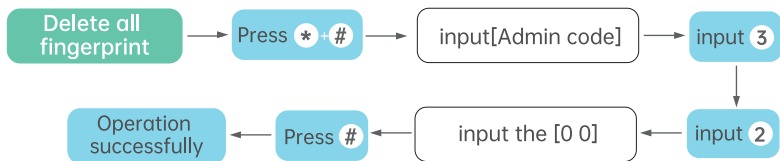
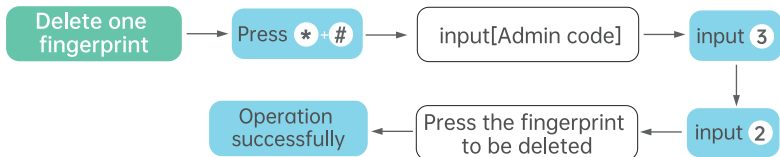
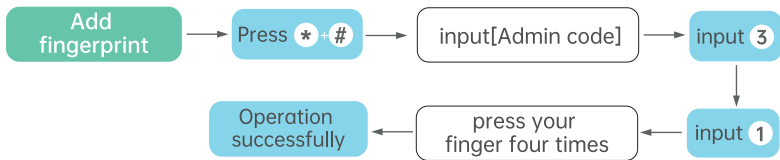
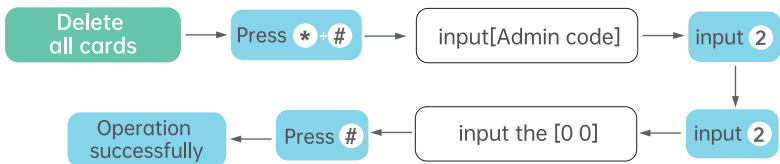
Lock Function Menu				
*# (Menu)	1. Manage Passcode	1. Add a passcode		
		2. Change the passcode		
		3. Changing the Administrator Passcode		
		4. Delete passcodes		
	2. Manage Card	1. Add a card		
		2. Delete the card		
	3. Manage Fingerprint	1. Add a fingerprint		
		2. Delete the fingerprint		
	5. Manage Settings	1. Sound Setting	0. Turn off sound	1. Turn on sound
		2. Auto lock Setting	0. Disable auto lock	1. Enable auto lock

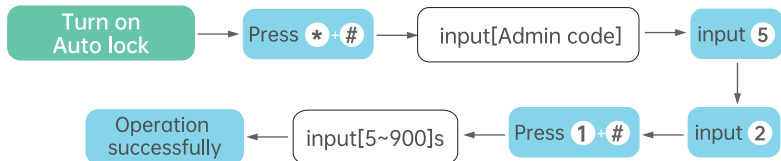
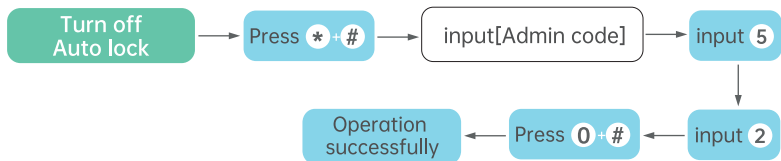
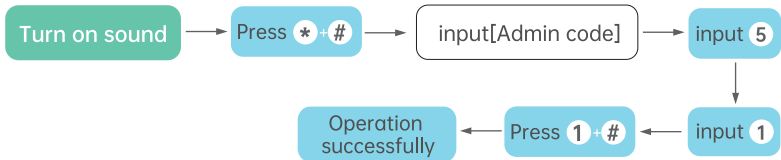
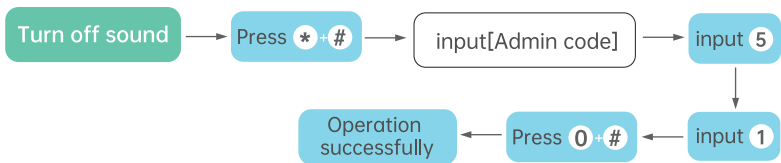
The default admin code is 123456. It's required that you set up a new admin code before programming. Please press asterisk * to return to the upper menu.

NOTE: All codes you set must be 4-9 digits.









// Detail Setting

1 Passcode Setting

Please input[*#]on the keypad, input administrator passcode to go to the voice navigation menu.Then press [1] to manage passcode.

After that, please press[1] to add passcode, press [2]to edit passcode, press [3]to edit administrator passcode, press [4]to delete passcode.

2 Add a New Passcode

Please input[*#]on the keypad, input administrator passcode to go to the voice navigation menu.

Listen to the voice prompt and input[1] go to manage passcode and then press [1]to add passcode.

Please input a 4 to 9 digits new passcode, press hash key to confirm.

Please input passcode again to confirm.

Passcode add successfully.

3 Change Old Passcode

Please input[*#]on the keypad input administrator passcode to go to the voice navigation menu.

Listen to the voice prompt and input[1] go to manage passcode and then press [2]to edit passcode.

Please input the original passcode, press hash key to confirm Please input a 4 to 9 digits new passcode, press hash key to confirm.

Please input new codes again, press hash key to confirm Operation successfully.

4 Change the Administrator Passcode

Please input[*#]and your [administrator passcode]go to the voice navigation menu.

Listen to the voice prompt and input[1] go to manage passcode and then press [3]to edit administrator passcode.

Please input 4 to 9 digits new administrator passcode,press hash key to confirm.

Please input your new passcode again, press hash key to confirm.

Administrator Passcode change successfully.

5 Delete Passcode

Please input[*#]and your [administrator passcode]go to the voice navigation menu.

Listen to the voice prompt and input[1] go to manage passcode and then press [4]to delete passcode.

Please input the [passcode to be deleted], press hash key to confirm or enter [00]and hash key to delete all passcodes Please input again, press hash key to confirm.

Operation successfully.

6 Card Setting

Please input[*#]and your [administrator passcode]go to the voice navigation menu.

Then press [2] to to the card Management menu.

After that, please press[1] to add card, press [2]to delete card.

7 Add Card

Please input[*#]and your [administrator passcode]go to the voice navigation menu.

Listen to the voice prompt and input [2]go to the card Management menu.

Please press[1] to add card.

Please hold the card close to the door lock and swipe your card Card add successfully.

8 Delete the Card

Please input[*#]and your [administrator passcode]go to the voice navigation menu.

Listen to the voice prompt and input[2]to to the card Management menu.

Please press[2] to delete card
Please swipe your card,Or enter 00 and hash key To delete all cards.

Take out the entry card close to the door lock.

Card delete successfully.

9 Fingerprint Setting

Please input[*#]and your [administrator passcode]go to the voice navigation menu.

Listen to the voice prompt and input [3]to the fingerprint Management menu.

After that, please press [1] to add a fingerprint, press [2] to delete.

10 Add Fingerprint

Please input[*#]and your [administrator passcode]go to the voice navigation menu.

Listen to the voice prompt and input[3]go to the fingerprint Management menu.

Please press[1] to add fingerprint and press your finger four times as prompted.

Fingerprint add successfully.

11 Delete Fingerprint

Please input[*#]and your [administrator passcode]go to the voice navigation menu.

Listen to the voice prompt and input[3]go to the fingerprint Management menu.

Please press[2] to delete fingerprint.

Please Press the fingerprint to be deleted in the fingerprint sensor or enter 00 and hash key to delete all fingerprints

Fingerprint delete successfully.

12 Normally Open Mode

After successful electronic lock opening, enter 123# before automatic lock closing (electronic lock opening/closing once again to remove temporary normal open).

13 Password Error Protection

If the password, fingerprint, or IC card fails to be authenticated for five consecutive times, the system is locked up for two minutes (after a power failure for more than 3 seconds, the system can be unlocked by powering on the system again).

14 Low Battery Alert

When the battery is low (lower than 4.8V), the keyboard is woken up or the system prompts you to replace the battery when the battery is low, and the keyboard blinks for 1 second.

15 Power Calibration

Replace a new set of batteries, enter *59# administrator password #1# on the keyboard.

Virtual password: 16 characters Mechanical key: 3pcs
IC: 2 PCS Standby power supply: Type-C

Category	Detailed parameters
The power supply voltage	DC 4.0v ~ 7v
Standby supply voltage	DC 5V
Low voltage alarm voltage	≤ 4.8V
Standby current	65mA
Working current	≤ 300mA
Working temperature	-20°C ~ +70°C
Working humidity	5 ~ 95%RH (No condensation)
Storage temperature	-40°C ~ +80°C
The keyboard type	Capacitive touch keyboard
Password number	250 groups
Fingerprint type	Capacitive semiconductor sensor
Fingerprint capacity	100PCS
IC card number	1000
Card read distance	0 ~ 2CM
The lock mode	Fingerprint/password /IC card/ mechanical key
FAR	<0.001%
FRR	<1.0%

// Troubleshooting

1. Installation

Questions	Answers
There is a gap between the mounting plate and the door.	Please make sure that the plate with word' Cable Hole'should face outside.
Keypad not responding.	A: Please make sure that the batteries are new and installed correctly. B: Please make sure that the ic cable is well connected to the port and was not damaged during installation.
The rear knob can be unlocked only after the key is inserted.	Please remove the lock and reinstall it. Do not insert the key during installation

2. Operation

Questions	Answers
After replace the new battery, the lock still prompts low battery.	Enter *59#Administrator Passwoed#1# on the keypad to calibrate.
Forgot administrator password.	Please refer to reset steps in order to erase all passcodes.Once the reset is complete,all passcodes will be erased and administrator password is 123456, press#to confirm.

Questions	Answers
The auto lock does not work.	Please active auto lock function once by unlock the lock after set up on keypad.
The battery power runs out.	Use Type-C cable connecting power bank could charge the lock for temporary (only for emergency use)
How many different passcodes/fingerprints /ic cards can I set?	Please kindly note that you can only set one admin passcode, but you can generate 250 guest passwords/100 fingerprints/1000 IC cards.
What should I do if the wrong code was entered?	If wrong codes have been entered over 5 times, the keypad will temporary lockout for 2 minutes
How to lock/unlock via keypad?	Long press "#" and hold for 2s to lock the door. Enter the passcode and press "#" to unlock the door.
What is the initial code while resetting?	The initial code is "000". Please enter "000"and press "#" on the keypad so you could reset successfully.
Can I use one IC card to match different door locks?	Yes, you can use one IC Card to match different door locks.

Questions	Answers
<p>Lock could not turn, doesn't work, what should I do?</p>	<p>1. Please check if door knob shows vertical when unlock, horizontal when lock. If not, please uninstall the lock and adjust spindle to vertical during installation.</p> <p>2. Please check your door directions, please adjust your door directions based on door hinge. (Please face the keypad and find the door hinge)</p> <p>If your door hinge is on the left side, please input *46# on keypad → Default Administrator Password "123456" # → 1# (L)</p> <p>If your door hinge is on the right side, please input *46# on keypad → Default Administrator Password "123456" # → 2# (R)</p>
<p>What to do if you have any other questions?</p>	<p>Please feel free to contact customer service, your satisfactory is our priority.</p>