

smonet



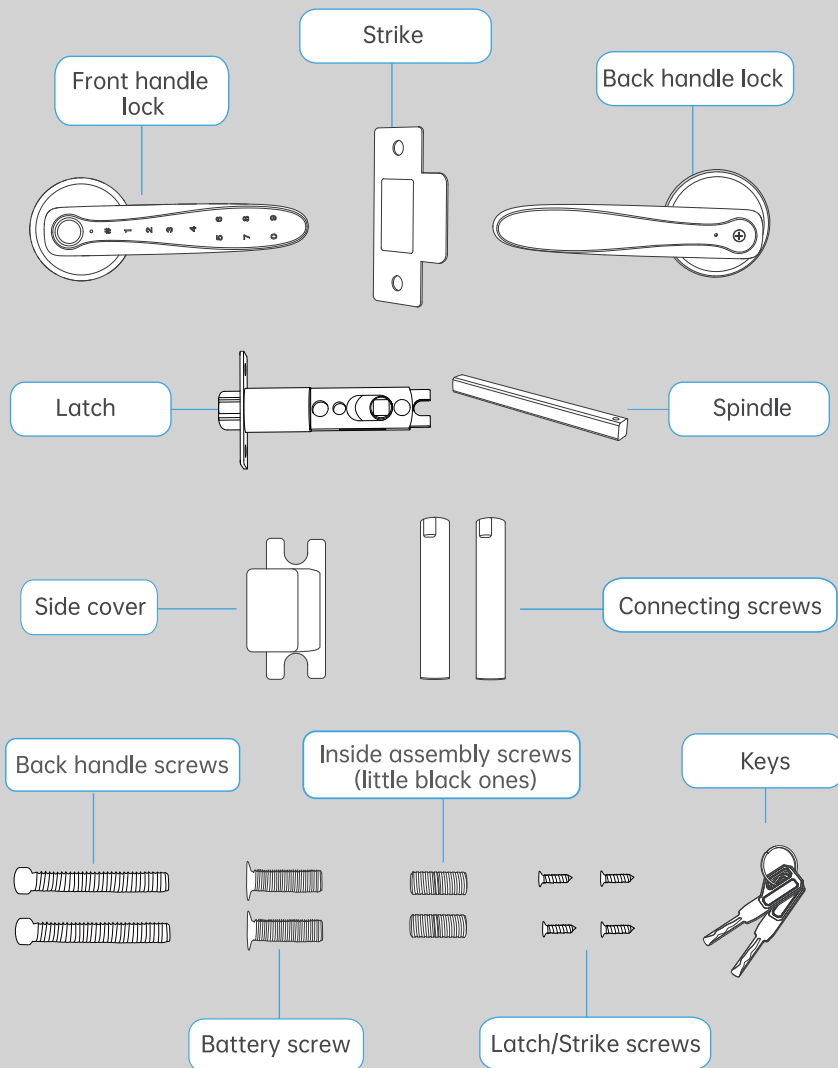
Smart Fingerprint Door Lock

QUICK START GUIDE

TABLE OF CONTENTS

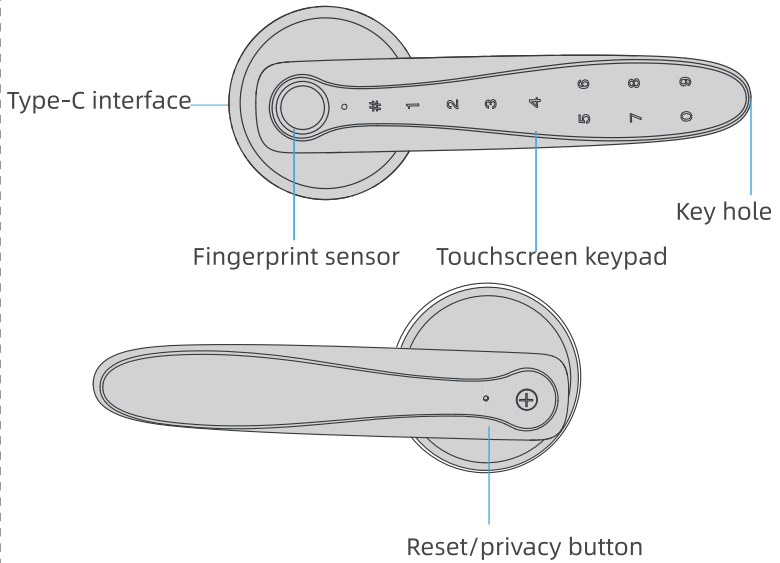
1. Parts included	< 01 >
2. Parts name	< 02 >
3. Are you ready?	< 03 >
Before installation	< 03 >
Video installation	< 03 >
4. Let's install !	< 04 >
5. Work with phone app	< 09 >
Pair the lock with your phone app	< 09 >
Setup the lock through the phone app	< 11 >
6. Connect with wifi gateway and Alexa	< 11 >
Wifi gateway connection	< 11 >
Work with Alexa	< 13 >
7. Frequently Asked Questions	< 17 >
Q1 Reset the lock	< 17 >
Q2 Setup the lock manually	< 17 >
Q3 Privacy lock	< 18 >
Q4 Pair the lock to another phone	< 18 >
Q5 USB Emergency unlock	< 19 >
Q6 Need help	< 19 >

Parts Included



Note: Phillip screwdriver and Template for door are included. The rest of screws that comes from the package are for back up.

Parts Name



“#” icon:

1. Your code plus # is to unlock
2. hold “#” to lit up the keypad

Indicator Light(exterior)

Blue: In operation

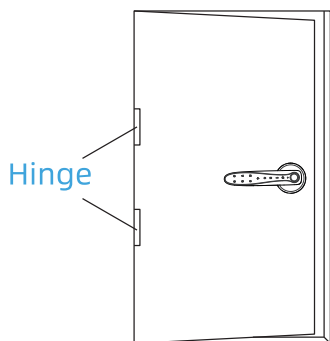
Green: Unlock successfully

Red: Wrong code

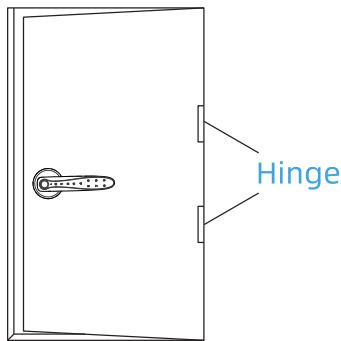
Are you ready?

1. Before installation

Please identify your door opening direction first. Standing outside and facing to the door, if the door hinge is at the left side, then it is left-handle door. If the door hinge is at the right side, then it is right-handle door.



Left-handle



Right-handle

PS: Keep the door open while installing and testing, in case that it locked you out.

Tool: Phillip screwdriver



2. Video link/QR code for installation

<https://youtu.be/cvOoczZsk7M>



Let's install!

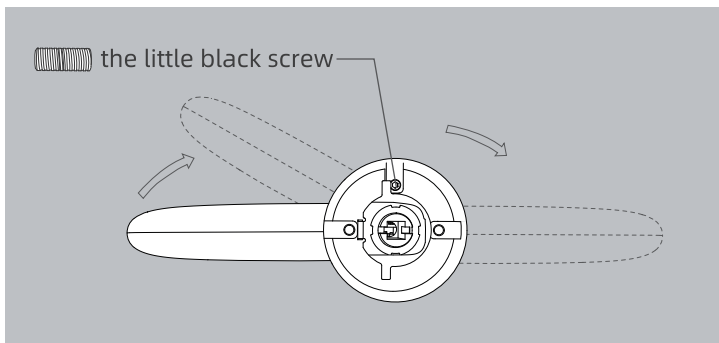
Step 1: Switch the direction of the two handles

Note: Please disregard step 1 if you don't need to switch it.

(1) Unscrew the little black screw and rotate the handle with 180 degree.

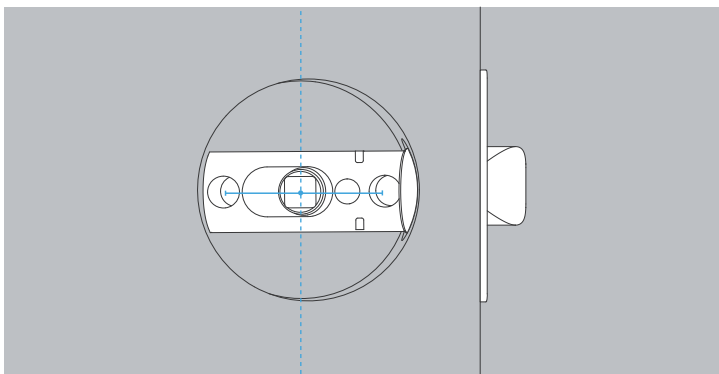
(2) Put the little black screw back.

Tip: Handle always points to the hinge of your door

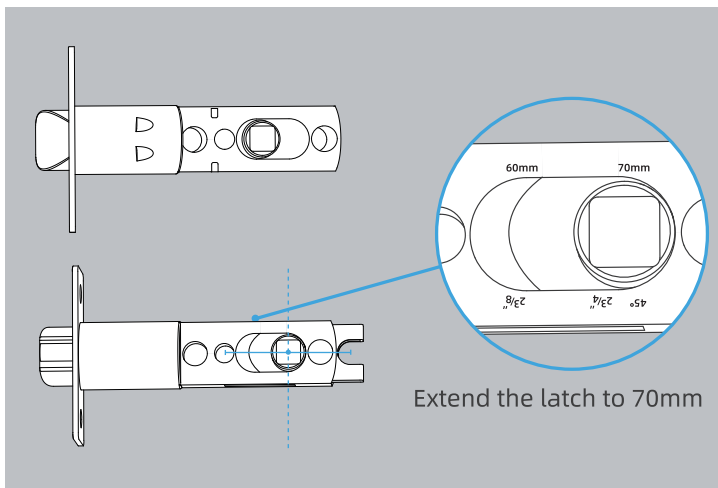


Step 2: Install the latch

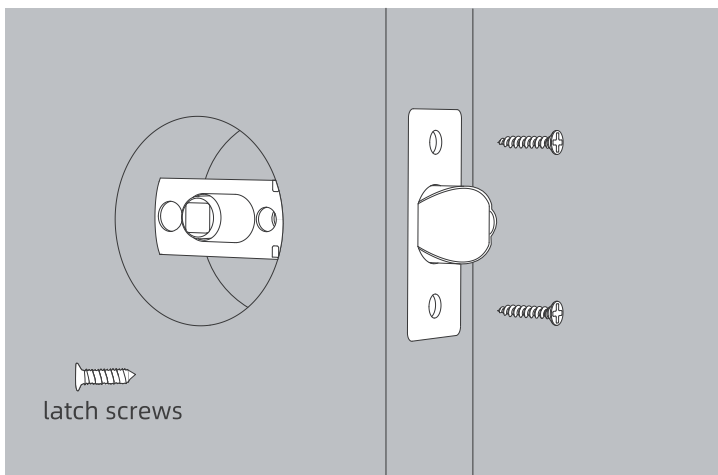
(1) Adjust the latch length. The slot in the latch is centered in the hole.



(2) If the slot is not centered in the hole, please extend to 70mm.



(3) Put the two latch screws on.

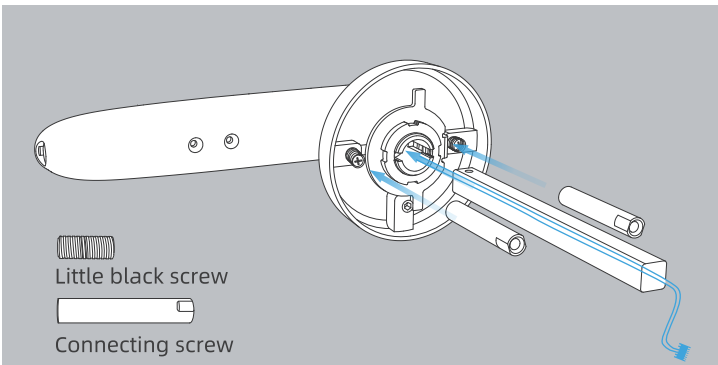


Step 3:

As the pic below shown, put the two little black screws tightly inside the front handle lock and then connect the connecting screws tightly.

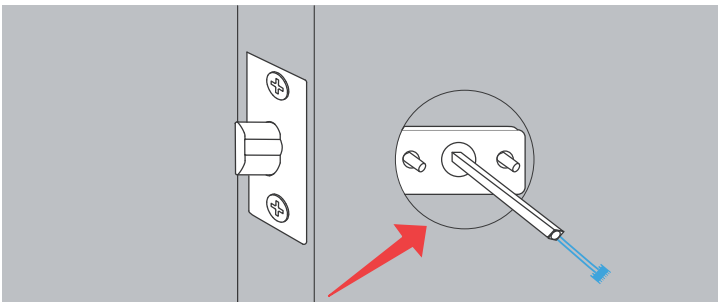
Take a look inside the lock, you will be able to see the mechanical spring.

Route the cable through the spindle and the spindle matches the mechanical spring.



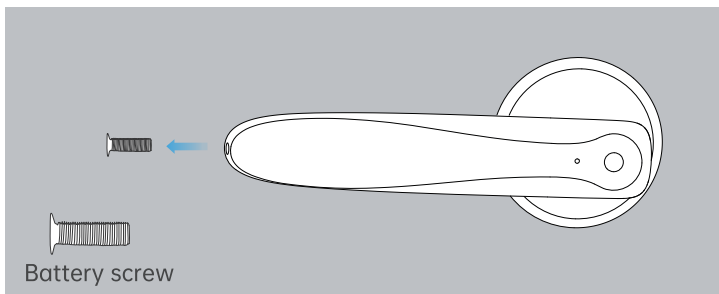
Step 4:

The spindle and connecting screws align with slots in the latch as shown, and push the front handle lock onto the door.



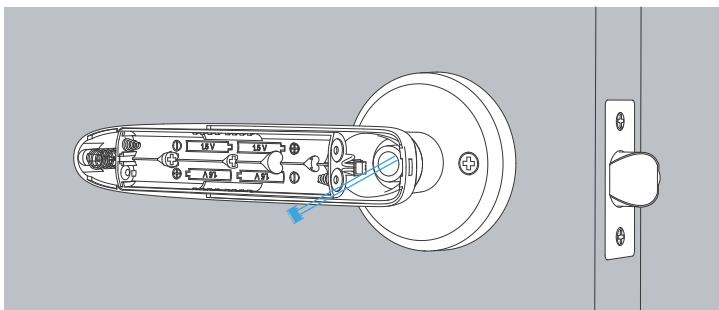
Step 5:

Take out the battery cover screw on the back panel lock.



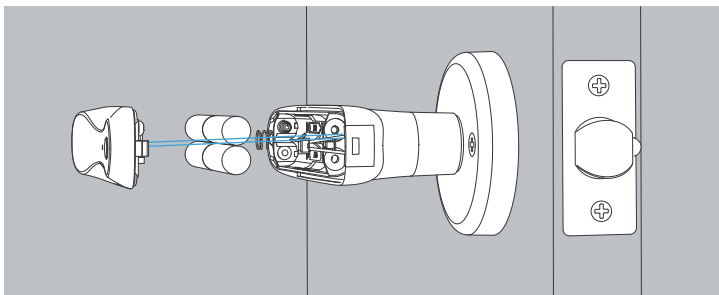
Step 6:

Connect two cables and put on the Back handle lock screws.



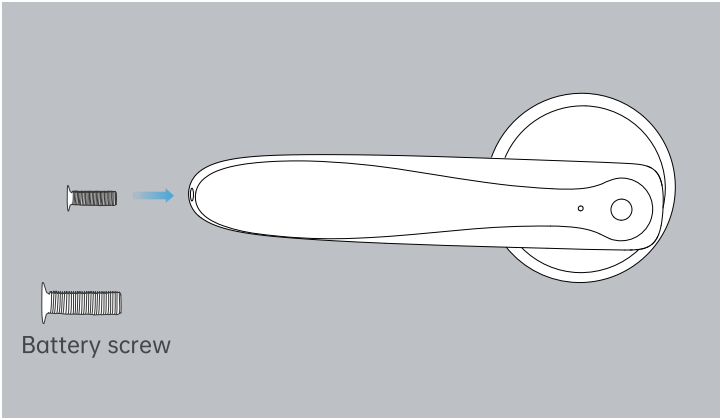
Step 7:

Put on the 4PCS AAA batteries (Not included).



Step 8:

Tuck the cables in the space and put the battery screw on.



Step 9:

Final test

- (1) Keep your door open.
- (2) Extend and retract the latch by Unlocking it from inside.
- (3) Input default admin code 123456# to unlock from outside.
- (4) Put on your fingerprint on the sensor to unlock from outside.
- (5) Repeat (1) to (4) while door has been closed.

Work with phone app

Note: If you wanna have it work on the phone app. Do not set up the code or fingerprint on the keypad before pairing it to the app via Bluetooth. However, if you did, please reset the lock first (See FAQ page < 17 > Q1) and then pair it to the app.

If you don't wanna setup the lock by phone app, please see FAQ page < 17 > Q2.

1. Pair the lock with your phone app

(1) Go to App Store or Google Play Store, search for “Next Lock” or “TTLock” .



Next lock



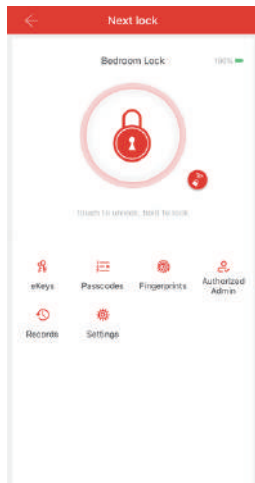
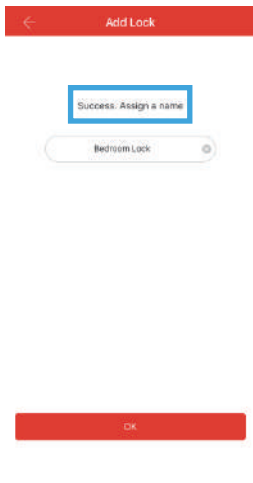
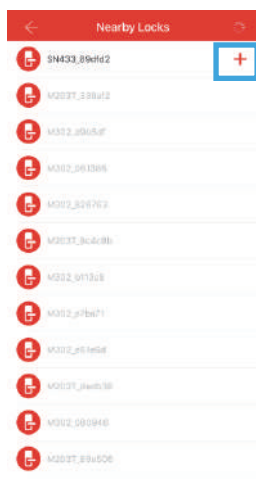
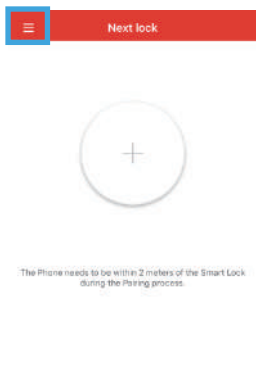
TTLock

(2) Register an account by your phone number or E-mail address and log in.

Next lock login/register screen. The top navigation bar has a red background with "Login" and "Register" buttons. The "Register" button is highlighted with a blue border. Below the navigation bar is the Next lock logo. There are two input fields: "Phone number/email" and "Password". A "Login" button is at the bottom. A red link "Forget Password?" is located below the password field.

TTLock registration screen. The top navigation bar has a red background with a back arrow and a "Register" button. Below the navigation bar are two radio buttons for "Email" and "Phone". There is a "Country/Region" dropdown menu with "America+1" selected. Below that are three input fields: "Enter your Phone number", "Password", and "Confirm Password". There is a "Verification Code" input field and a "Get Code" button. A note states: "Your password must have 8-20 characters, and include a minimum of two types of numbers, letters and symbols". A "Register" button is at the bottom.

(3) After login, turn on the Bluetooth on your phone > Go to “three-line” at the upper left corner > Add lock > Touch any key to activate the keypad > Next > Nearby locks > hit the “+” at the right side > success, Assign a name.



2. Setup the lock through the phone app

(1) Tap the big circle with the lock icon in it once, it will unlock. Hold it for 3 seconds, it will lock.

(2) Go to “settings” >basics>admin passcode, tap the number code in gray, you can input new admin passcode here.

(3) Go to “fingerprint” > add fingerprint > enter any name > start. Follow the prompt to input your fingerprint on the reader for 4 times.

(4) Go to “authorized admin” > create admin > enter any name > permanent > input recipient account > name > allow remote unlocking > send.

Note: If you want to share the lock with others on their phone, please follow the instruction #4. He/she has to download the app, register an account by his/her own mobile number or email address and log in. Recipient account that you need to input is his/her app account.

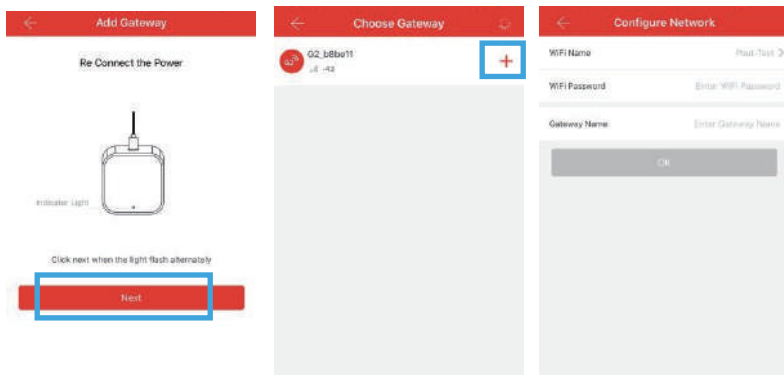
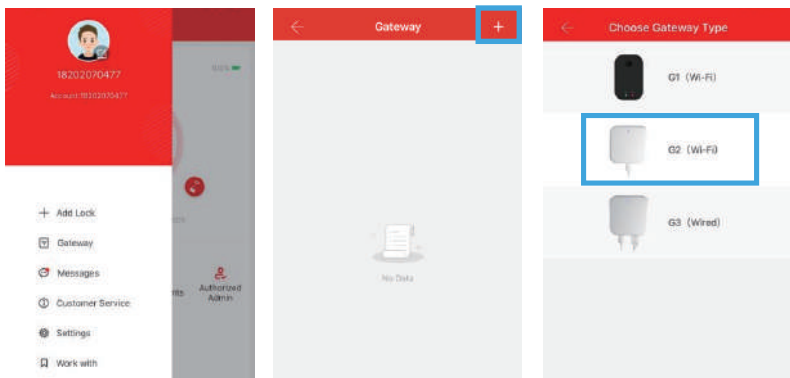
(5) Go to passcodes > generate passcode > enter any name > permanent/one time > generate. You can unlock the lock by the passcode that you have already generated.

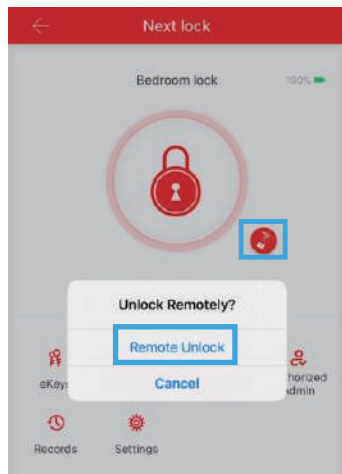
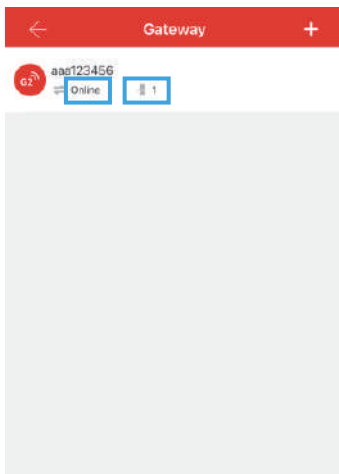
Connect with wifi gateway and Alexa

1. Wifi gateway connection(Extra device,not included)

Note: Make sure the wifi gateway is close to the smart lock in order to get more stable signal (10ft). The gateway is only compatible with 2.4g wifi signal.

After pairing to your phone app successfully, please go to the “three-line” at the upper left corner > gateway > “+” > G2 (Wi-Fi) > Connect the power, the indicator light is blinking red and blue > Next > “+” > enter your 2.4g wifi password > enter gateway name > ok. A few minutes later, wifi gateway shows online and 1 lock connected, it means success. Go back to the main page, hit the little red icon with wifi sign, it will ask you if you wanna remote unlock.

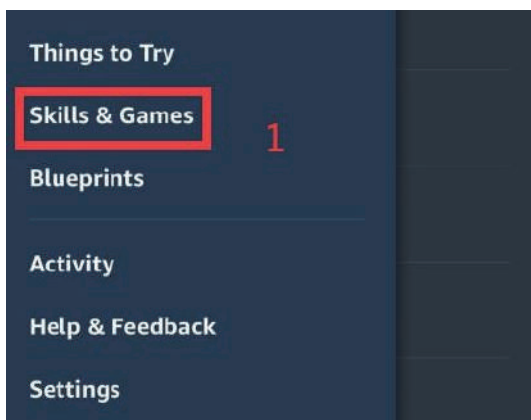




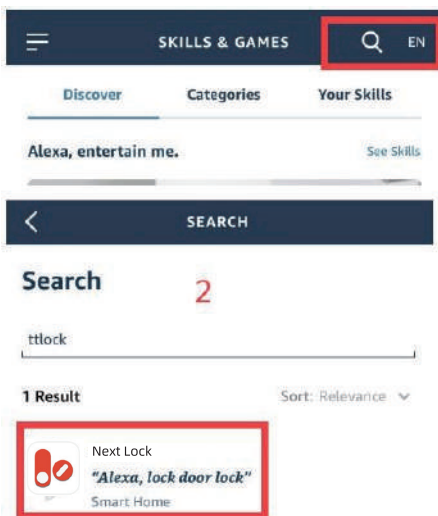
2. Work with Alexa

After connecting with the wifi gateway, and following the instruction below, you can voice control the smart lock.

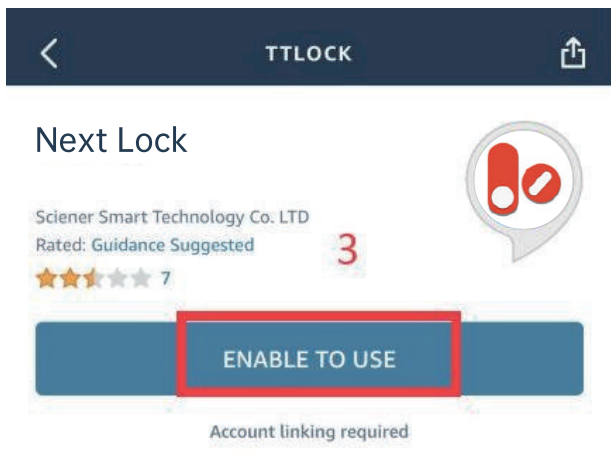
(1) Go to your "Amazon Alexa" on your mobile phone, and find "Skills & Games" in the menu bar in the upper left corner.



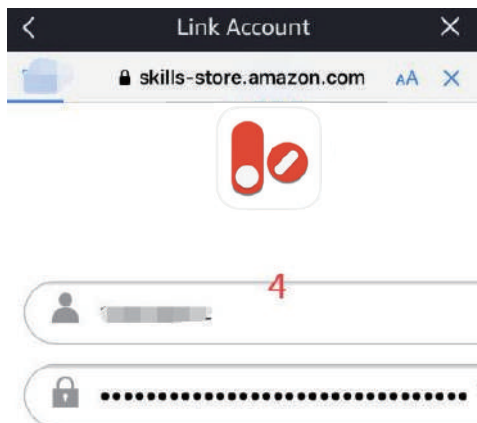
(2) Search for "Next lock" or "TTLock" .



(3) Enable to use.

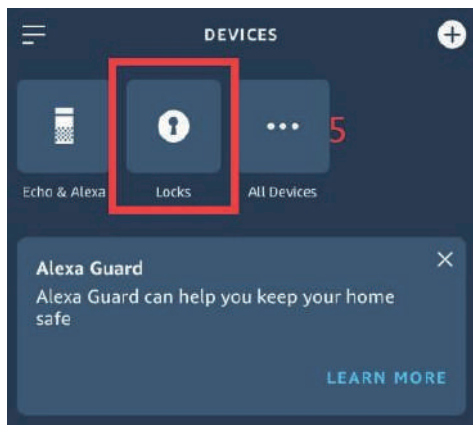


(4) Enter the login interface (login info for Next lock or TTLock) , hit “enable” .

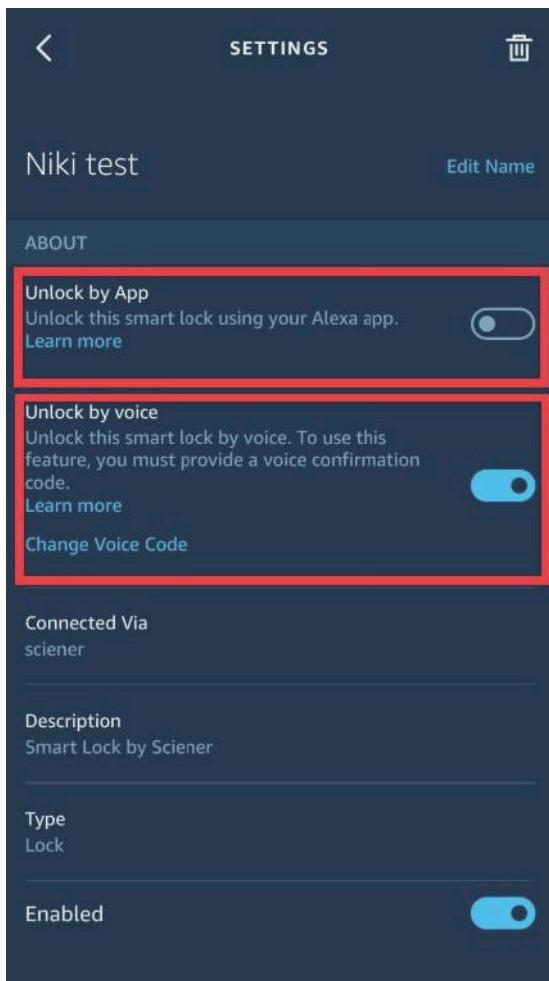


Note: If the login failed, please fill in the area code "+1" in front of phone number. No worries, It is normal that password you entered will automatically become out of order.

(5) Give Alexa the "discover" command, and the Locks option appears on the page.



(6) Enter the setting interface, authorize APP control and voice control, and then complete the matching after saving.



Frequently Asked Questions

Q1:

How do I reset the lock?

Answer:

Hold the reset button until you can hear 5 consecutive beeps. And then input "000#" on the keypad to finish the reset process. After reset successfully, you can unlock it by any fingerprint or the default admin passcode "123456#".

Q2:

If I don't want to download the app, how do I setup the lock manually on the keypad?

Answer:

(1) Change admin passcode: input "#12# + old admin code # + new admin code # + new admin code #" on the keypad.

(2) Record fingerprint: input "#80# + admin code #" and then cover the fingerprint sensor/reader for 4 times by your fingerprint while it accompanied by a short beep and blue light flash, success with a long beep, your fingerprint is added (green Light flash). Finally, just hit "#" key to the end.

(3) Add new passcode: input "#80# + admin code # + new passcode # + new passcode #. Finally, just hit "#" key to the end.

(4) Remove all fingerprints: input "#70#+admin passcode#" on the keypad.

(5) Remove all passcodes except admin passcode: input "#71#+ admin passcode #" on the keypad.

More info that you need to know:

(6) Passage mode: Unlock it by passcode or fingerprint and then input “123#” on the keypad before it’s locked automatically.

Note: Passage mode will be invalid if you hold the “#” key to lock or unlock it by fingerprint or passcode.

(7) Anti-peep passcode: For example, if your code is 123456, you can still unlock the lock by inputting “random number + 123456 + random number #.

Note: Totally no more than 16 digits in length.

(8) Lock security protection: 5 times incorrect attempts will be locked out for 3 minutes. However, you can unlock it through the administrator phone app.

Q3:

How do I lock people out if I want personal space?

Answer:

Hold the privacy button for 3 seconds and then you will hear 1 long beep. People can't unlock it from outside unless unlocking by admin code or administrator phone app.

Q4:

I paired the lock to my phone app successfully, how do I pair the lock to my wife’s phone?

Answer:

View Page < 11 > “Set up the lock through the phone app” instruction number 4.

Q5:

How do I know and what should I do if the battery almost runs out?

Answer:

Low battery alert: After lit up the keypad by holding “#” key, you can hear 4 times beeps, at the same time, the keypad light keeps flashing.

If you cannot replace the batteries in a timely manner, you can use a USB power bank to temporarily power the lock in order to use the touchscreen keypad, or fingerprint reader to open the door.

Q6:

How to activate the lock warranty? Do you have tech support online?

Answer:

Toll free to: 1-888-989-8028

(Available for after 6PM at Pacific Time Zone)

E-mail: Fingerprintlock95@hotmail.com

Doorlock95@hotmail.com

If we missed your calling, please don't worry, our representative will definitely return your call within 24 hours. If you send us an E-mail, you will get response within 24 hours as well. ^-^